

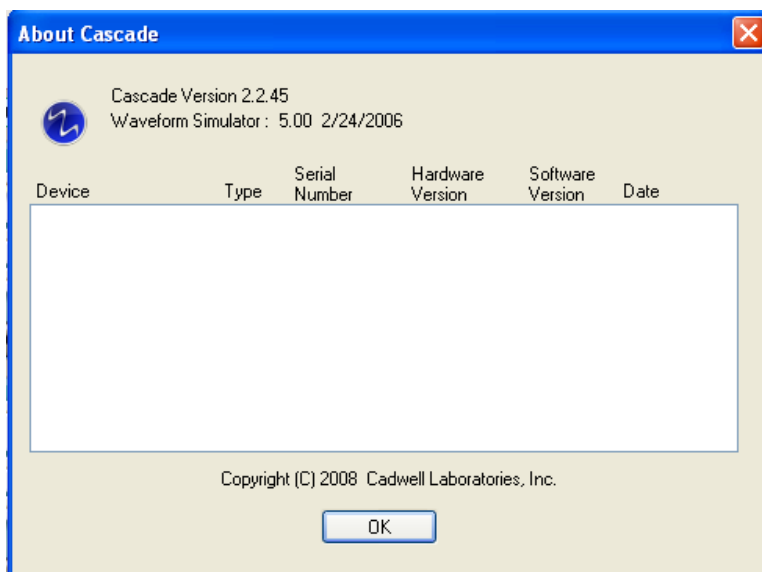
Cadwell Cascade Hardware Simulator

To use the Cascade Hardware Simulator.



- To Start Cascade Simulator Mode
 - Start>Run>
 - C:\Cadwell\Cascade\UseHardwareSimulator.reg

Help and about Cascade when in simulator mode.



To have the Cascade application look for connected hardware.



- To Get Out of Cascade Simulator Mode
 - Start>Run>C:\Cadwell\Cascade\UseHardware.reg