

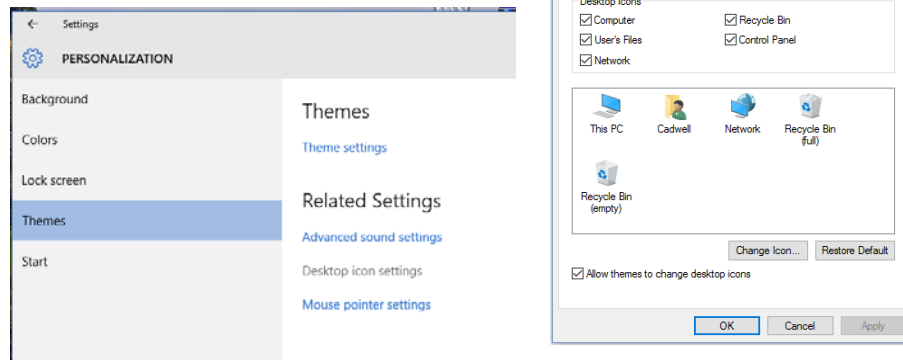
Configuring Windows 10 for Sierra Wave

This document will describe how to setup Windows 10 for optimal performance of the Sierra Wave program, please configure Window 10 as outlined in the following instructions.

Cadwell recommends Windows 10 Pro edition.

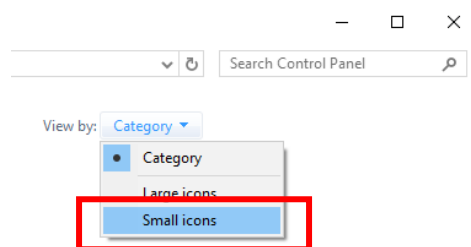
1. Add **This PC, Network, User Files, and Control Panel** icons to Desktop:

- From the **Desktop**, right click and choose **Personalize**.
- From the Personalization screen, choose **Themes**, then **Change Desktop Icon** settings.
- Check the boxes for the Computer, User's Files, Network, Recycle Bin, and Control Panel icons, then click the **Apply** and **OK** buttons.



2. Turn off the UAC (User Account Control) before installing Sierra Wave:

- From the **Desktop**, click on the **Control Panel** icon.
- Change the “View by:” to “**Small Icons**”. *Do not use “Category View”.*




- Then click on **User Accounts**.
- In that dialogue box click on “**Change User Account Control Settings**”.


Make changes to your user account

[Make changes to my account in PC settings](#)

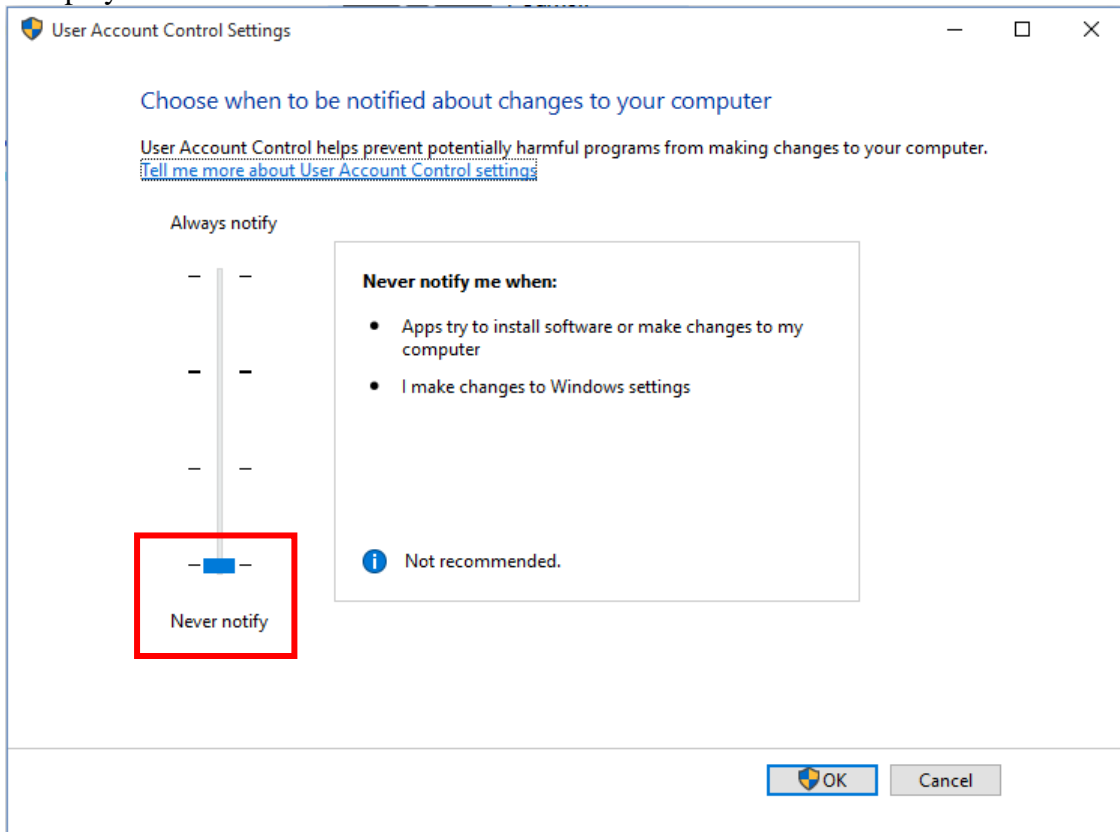
 [Change your account name](#)

 [Change your account type](#)

 [Manage another account](#)

 [Change User Account Control settings](#)

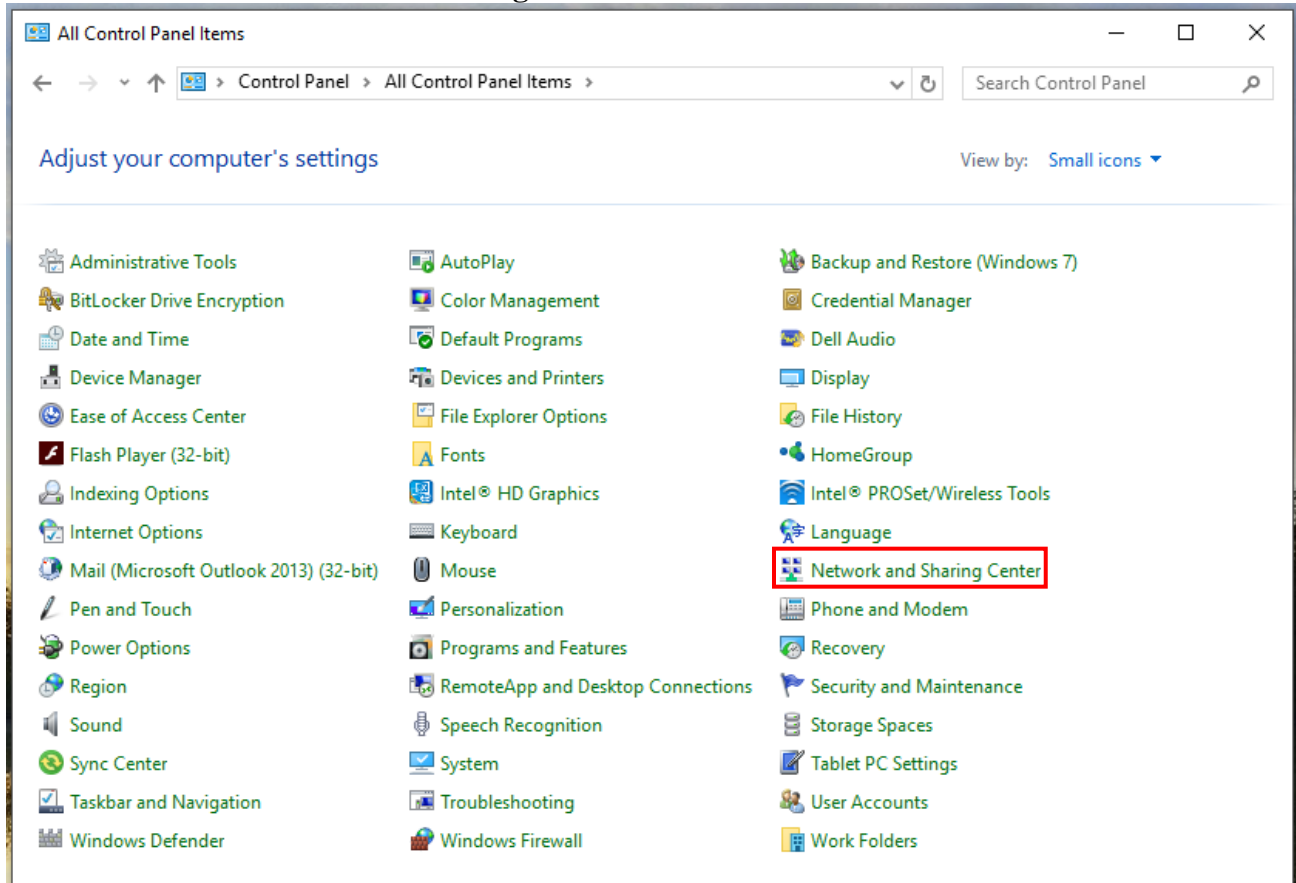
- Move the slider to the “**Never Notify**” position. Click **OK**. Answer “**Yes**” if a prompt is displayed.



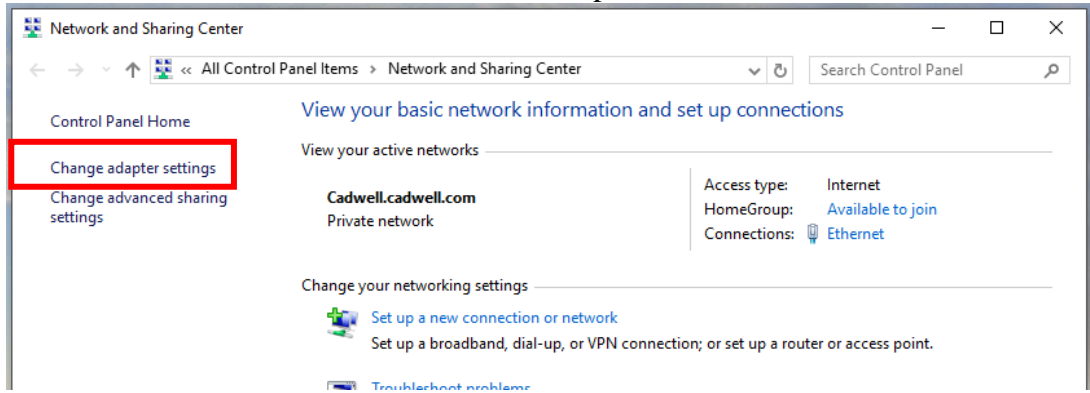
- **Restart** the computer.

3. Configure the Network Card:

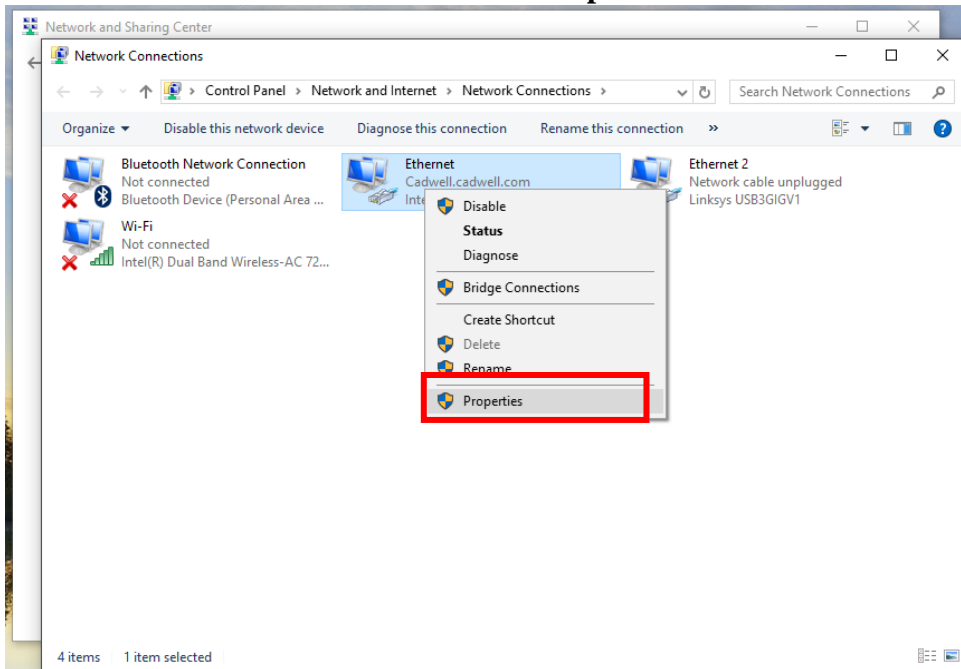
- From the Desktop, click on the **Control Panel** icon.
- Click on “**Network and Sharing Center**”.



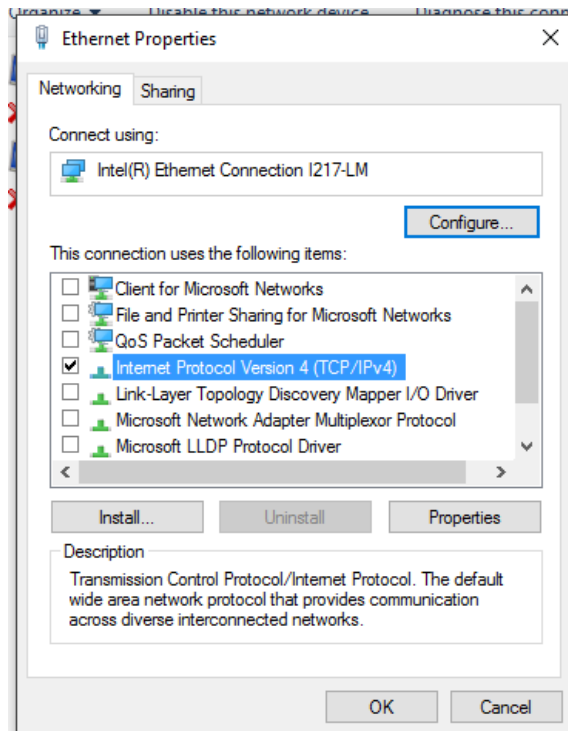
- Then click on “**Change Adapter Settings**” on the left hand task pane. This will show all the network connections available on the computer.



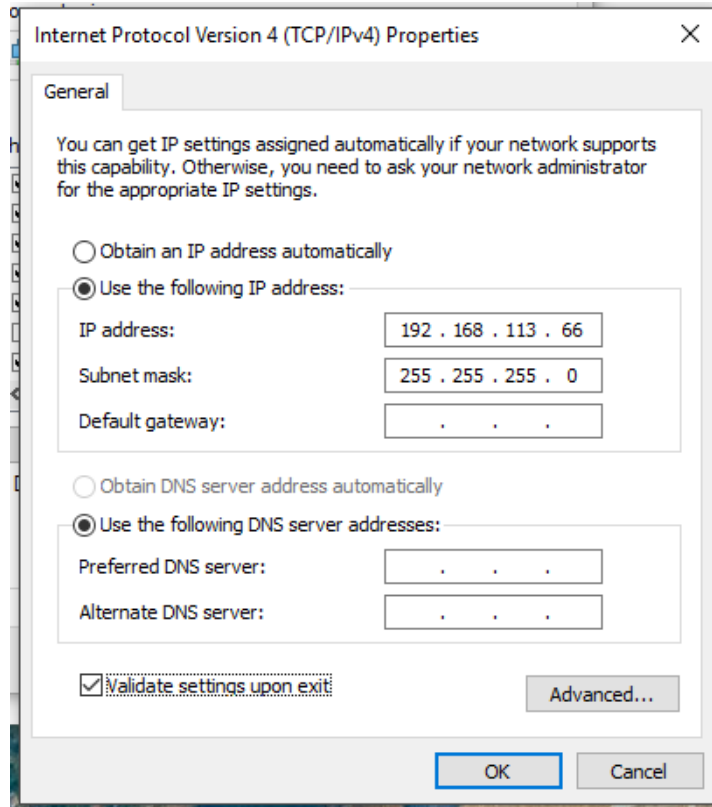
- **Right-click** on the LAN or High-Speed Internet connection that will be used to communicate to the base unit and select **“Properties.”**



- Uncheck all the protocols in the list except for the **Internet Protocol Version 4 (TCP/IPv4)**.

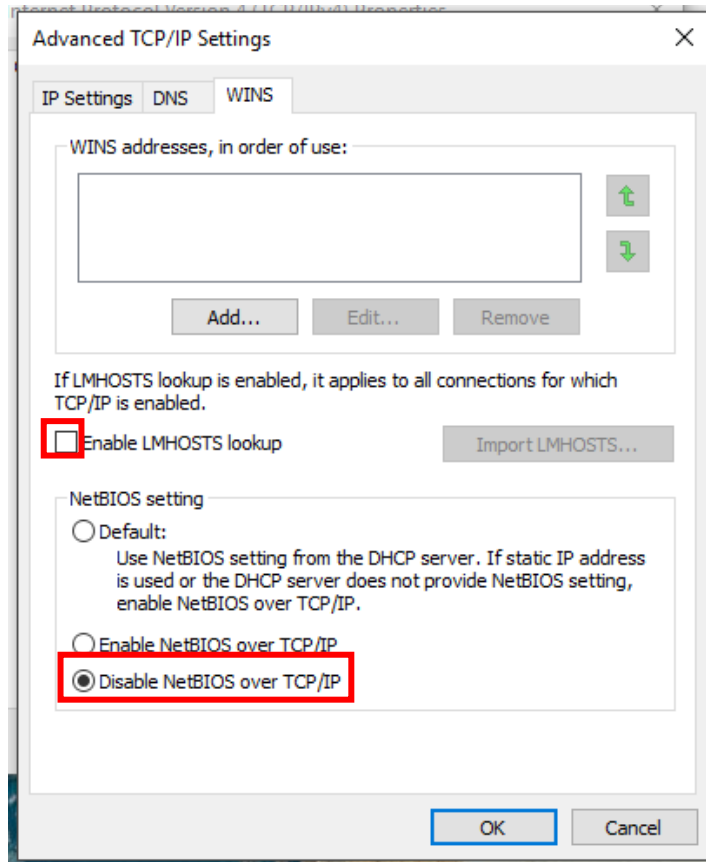


- Then double-click on that protocol and change the radio button from “Obtain an IP address automatically” to “Use the following address.”

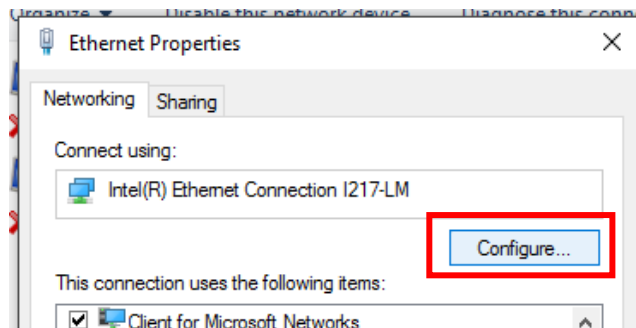


- Input the default Cadwell® IP address. It is **192.168.113.66**. The default Subnet Mask can be used of **255.255.255.0**.

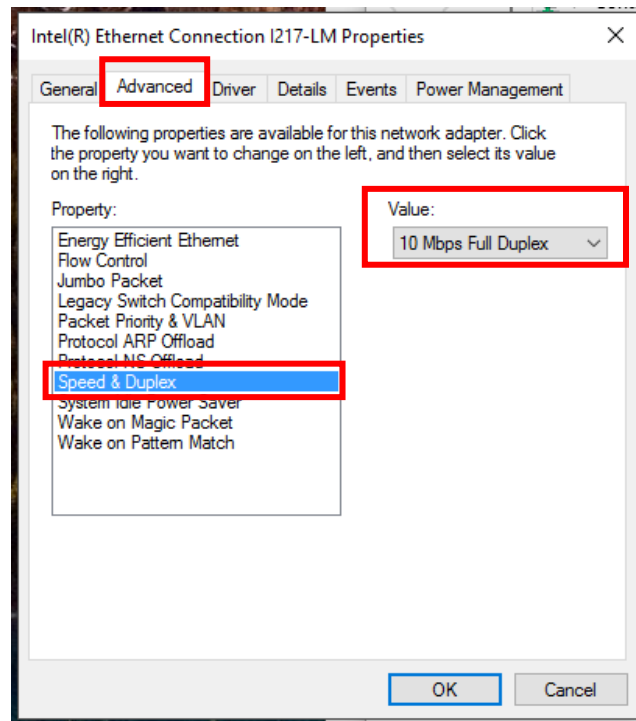
- Once those addresses have been entered; click on the **Advanced** button in the bottom right-hand corner of the screen. Click on the **WINS** tab and uncheck the “**Enable LMHOSTS lookup**” check box and change the NetBIOS setting from Default to “**Disable NetBIOS over TCP/IP**”.



- Click **OK** two times, and then **Close**, to get back to the network connections page.
- Once again, **right-click** on the LAN or High-Speed Internet connection that will be used to communicate to the base unit and click on “**Properties**”.
- Click on the **Configure** button in the upper left corner.

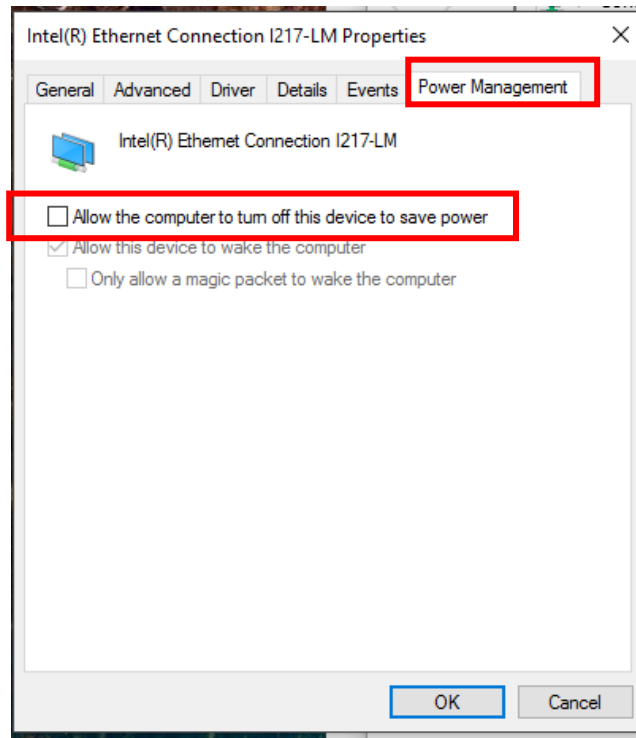


- Click on the **Advanced** Tab then select the “**Speed and Duplex**” listing. *It might also be displayed as “Media Type, Connection Type or Link Speed & Duplex”. Sometimes there may be a separate Link Speed tab.*



- Click the drop down list on the value right and select **10 Mbps Full Duplex**.

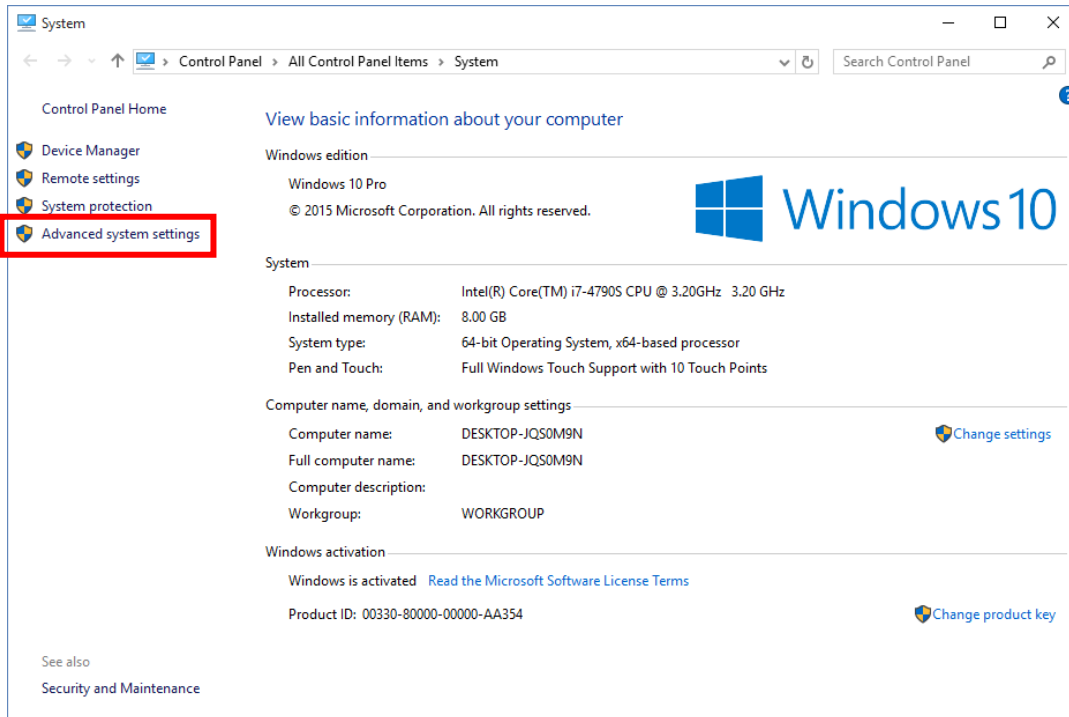
- Click on the **Power Management** tab. **Deselect the “Allow the computer to turn off this device to save power”** check box and then click **OK**. *Note not all network cards will have a power management tab.*



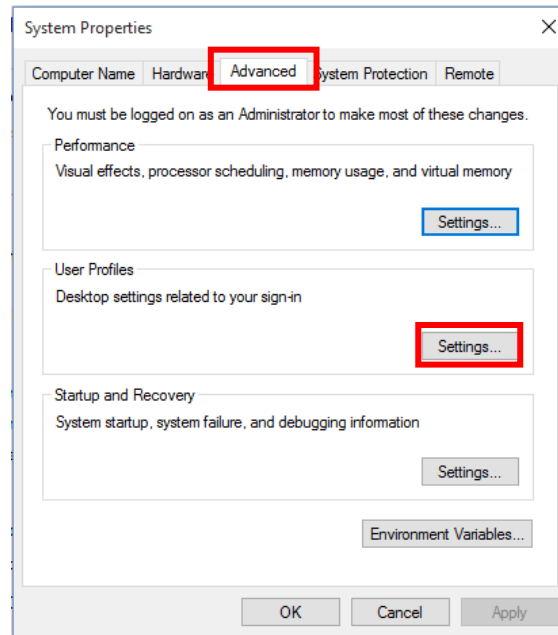
- **Right-click** on the LAN or High-Speed Internet connection that will be used to communicate to the base unit and click on **“Rename.”** Type in **Wave Base** and press **Enter**.

4. Disable the animation controls and elements within windows:

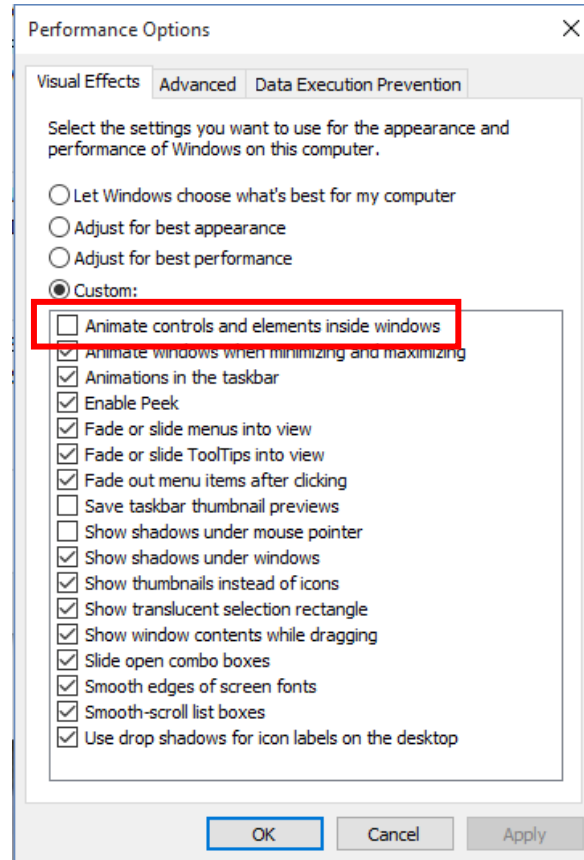
- Right-click on the **This PC** icon and click **Properties**, then click on the “**Advanced System Settings**” link.



- Click on the **Advanced** tab, then the **Settings** button in the **Performance** section.



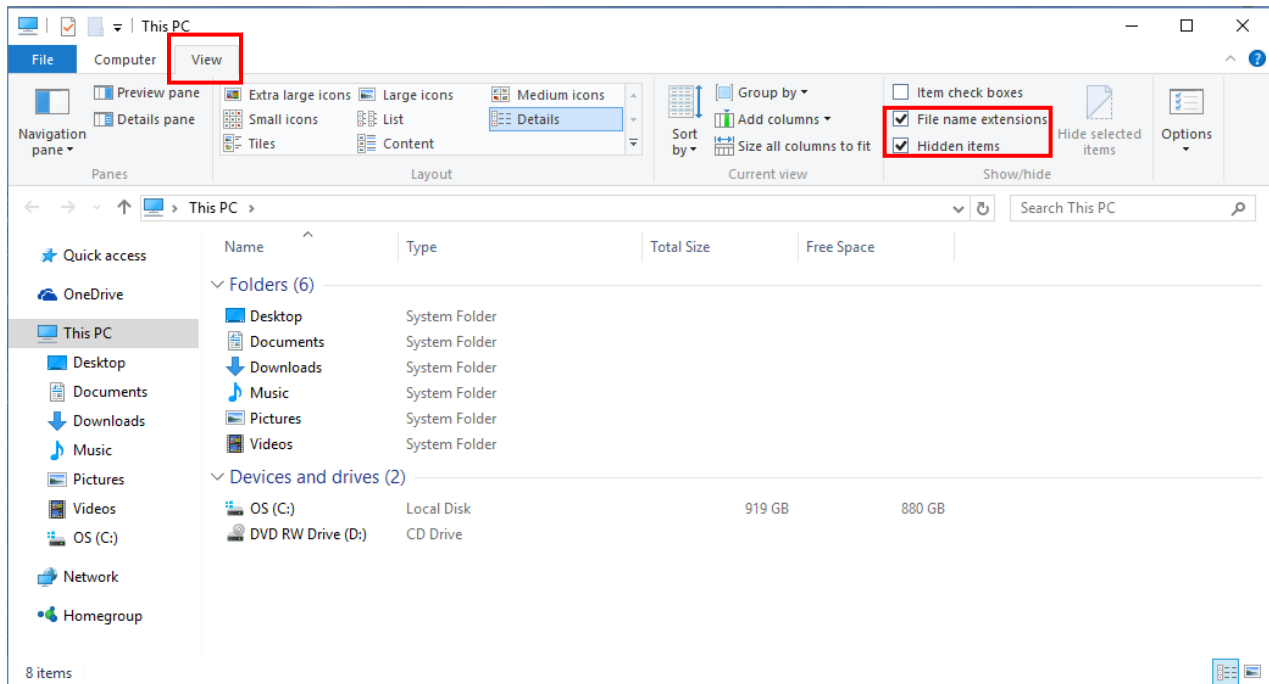
- This will bring up the dialog box that will turn off the animations of buttons. Uncheck the top check box named “**Animate controls and elements inside windows.**”



- Once that is done click **Apply** and **OK** out of everything.

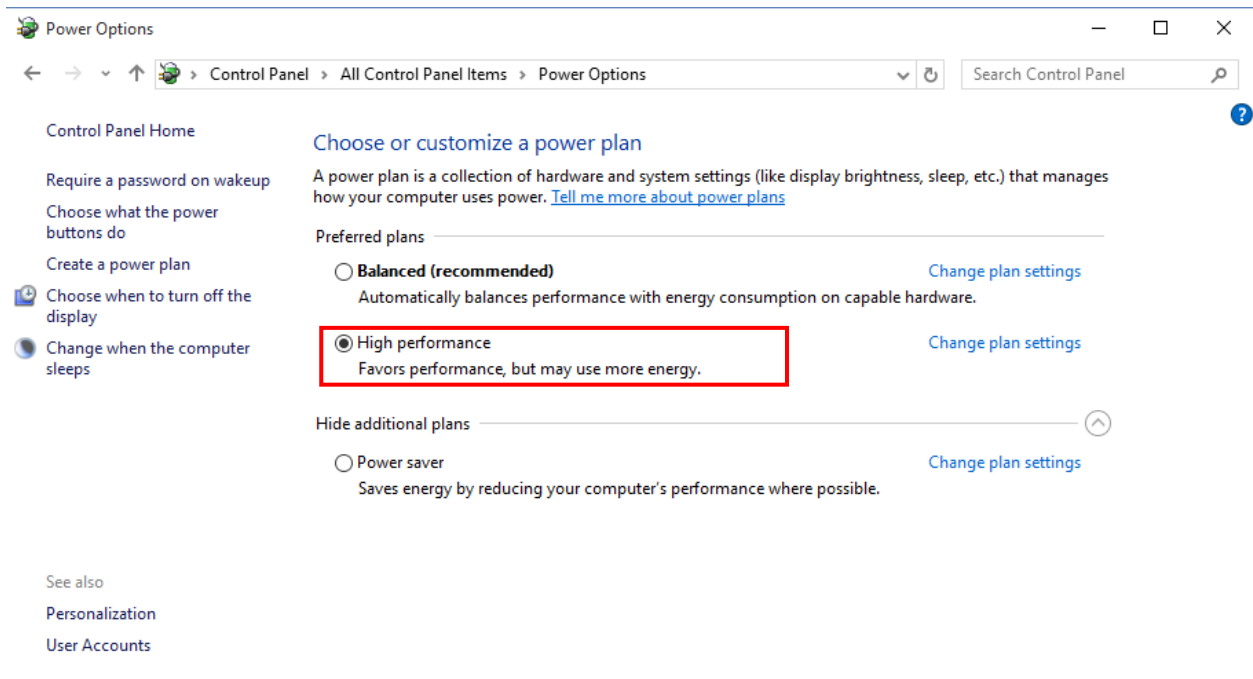
5. Enable the File Extensions:

- Double-click “**Computer**” then click on the “**View**” tab. Choose the “**File Name Extensions**” and the “**Hidden Items**” boxes.
- You can also choose how you want your views to display from this tab.



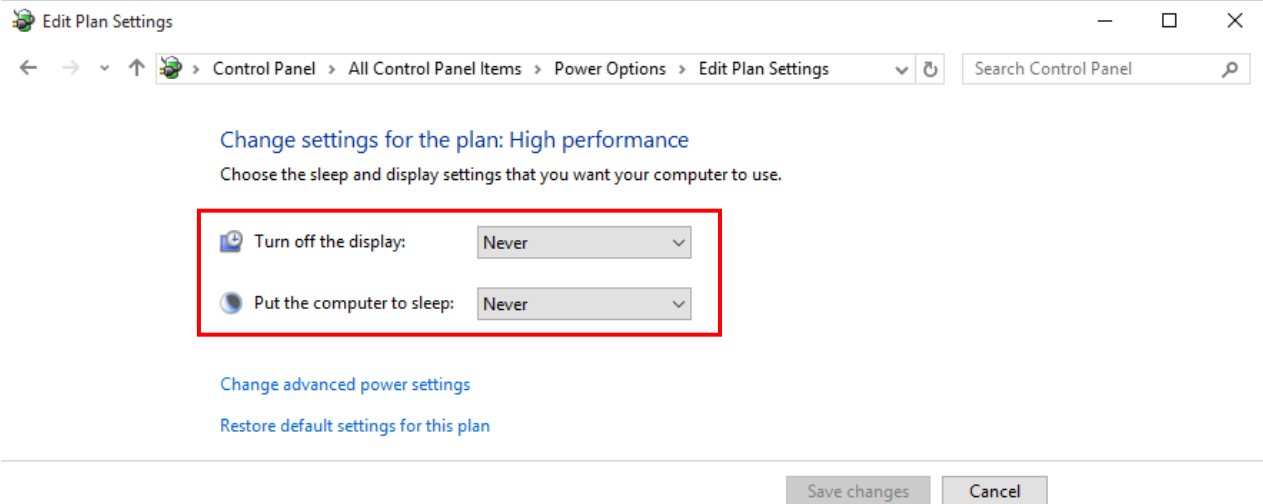
6. Configure the Power Settings for a Laptop or Desktop:

- Click on the **Desktop Icon** in the Windows **Start Screen**.
- From the Desktop, click on the **Control Panel** icon.
- In the control panel list click on **“Power Options”**.
- Select the **High Performance** option. If you don’t see this option, click on Show Additional Plans.

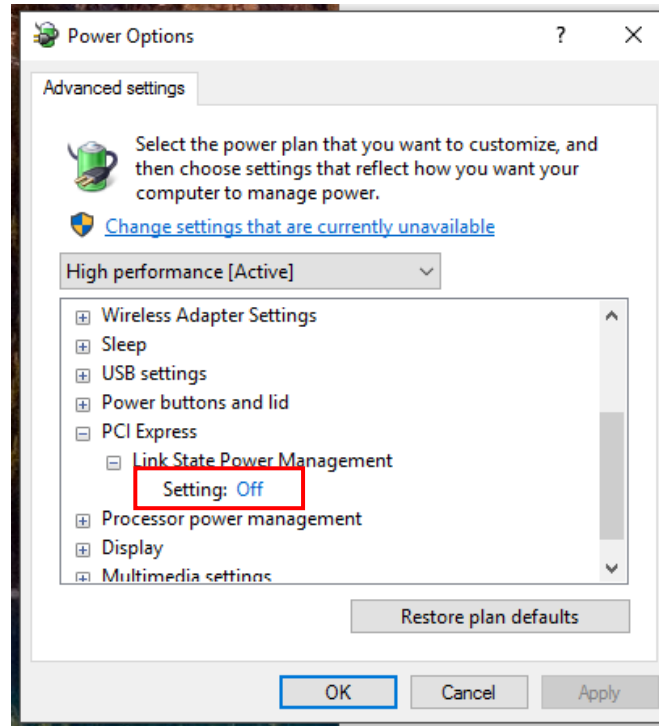


- Click on the **“Change Plan Settings”** link under High Performance.

- Click the dropdown list for both “**Turn off the Display**” and “**Put the Computer to Sleep**” and set them to **NEVER**.



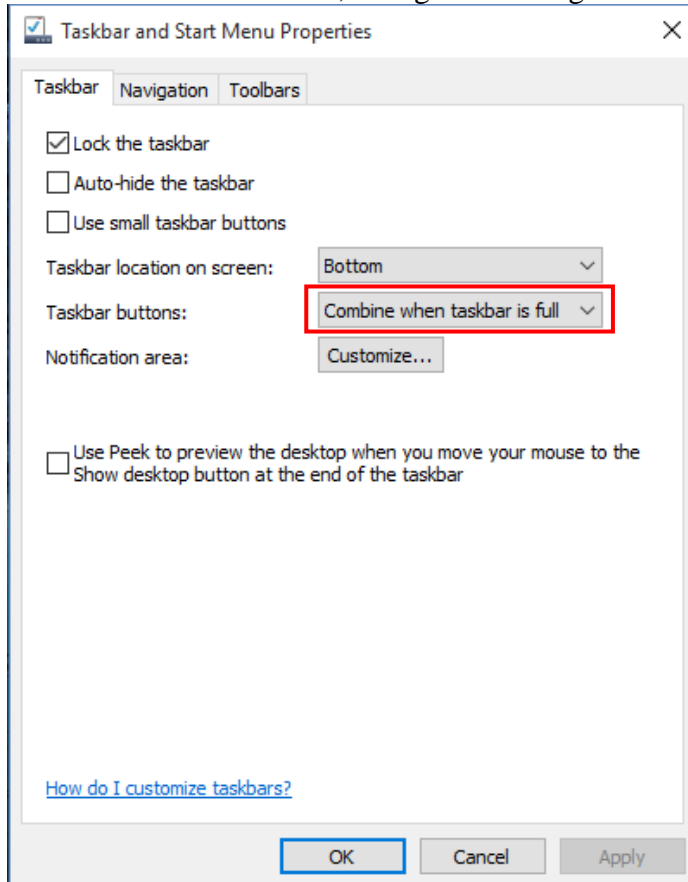
- Next click the “**Change Advanced Power Settings**” link and set the “**Link State Power Management**” setting to **OFF**. That only needs to be done under the **PCI Express** setting. Then click **OK** out of everything to set all the power settings.



7. Configure the Taskbar Properties:

- **Right click** on the **Taskbar** at the bottom of the screen and select **Properties**.

- For the **Taskbar Buttons**, change the setting to “**Combine when taskbar is full**”.



- Click **Apply**, and then click **OK**.

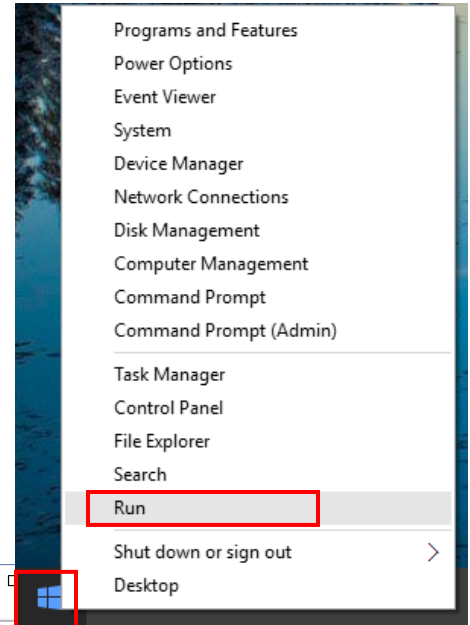
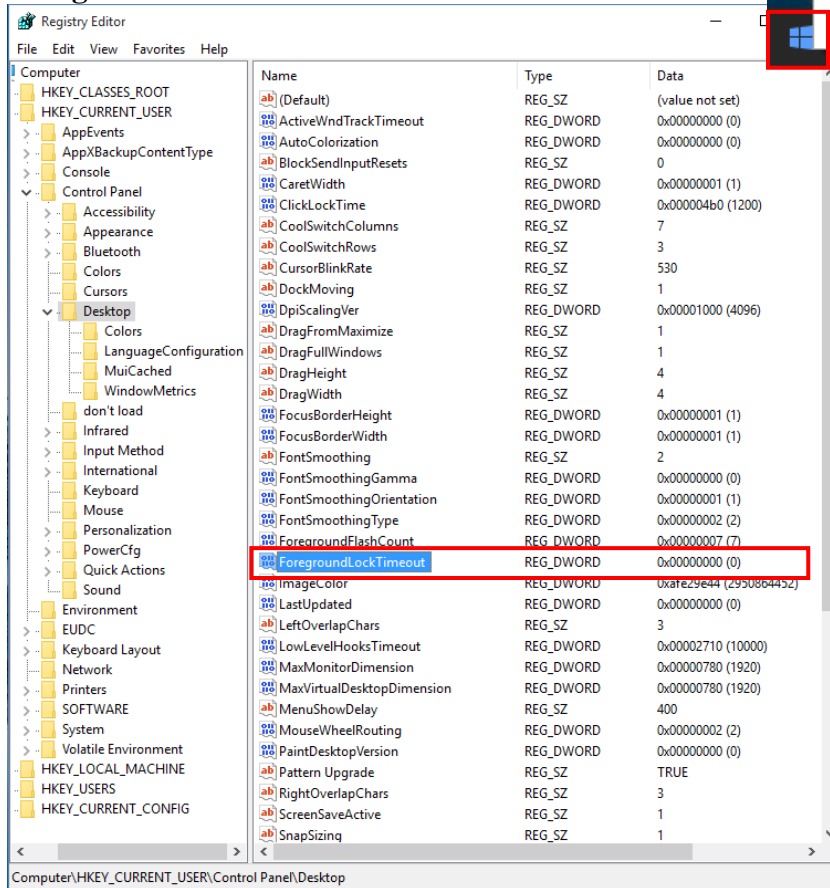
8. Fix the New Program Window so that the QuickReport program will automatically come to the front when launched. This is per the Microsoft Knowledge Base article #886217:

To resolve this issue, modify the value of the **ForegroundLockTimeout** registry entry in Registry Editor. To do this, follow these steps:

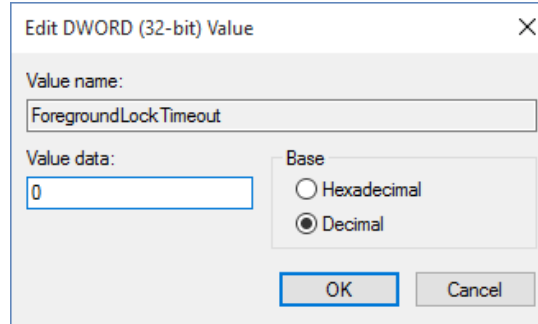
- Right click on the **Start icon**.
- Select **Run**. In the Run window type **regedit** and click **OK**.
- In the Registry Editor, locate and then click the following registry subkey:

HKEY_CURRENT_USER\Control Panel\Desktop

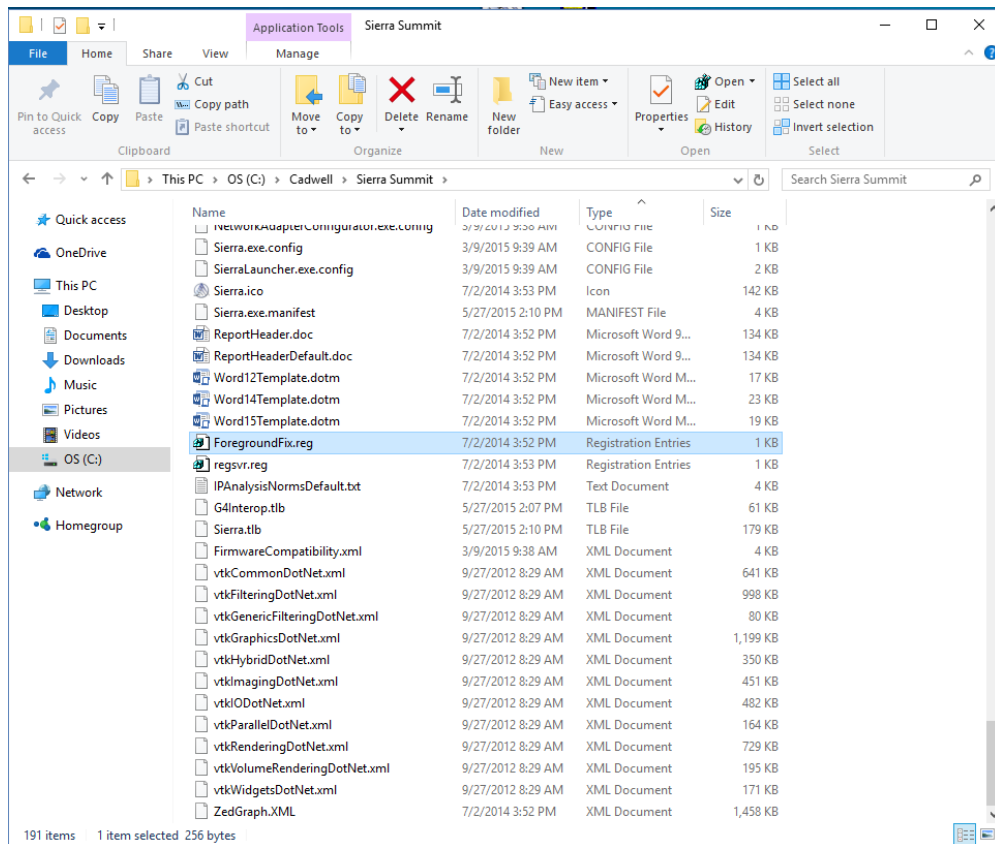
- In the right pane, locate and then double-click **ForegroundLockTimeout**.



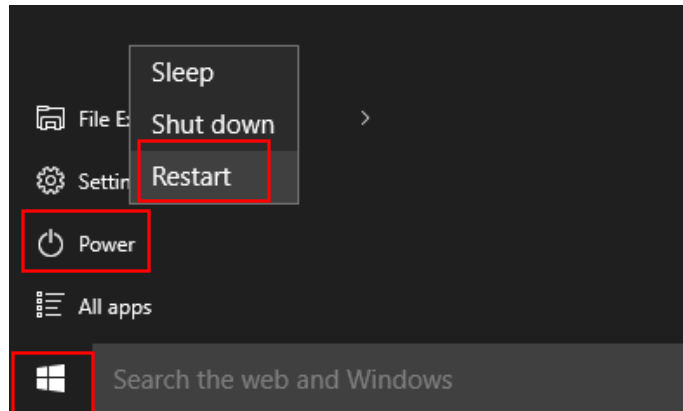
- Under **Base**, click **Decimal**, type **0** in the **Value data** box, and then click **OK**.



Note: The default decimal value for the `ForegroundLockTimeout` registry entry is set as **200000**.



- Close the Registry Editor.
- **Restart your computer** for the change to take effect.



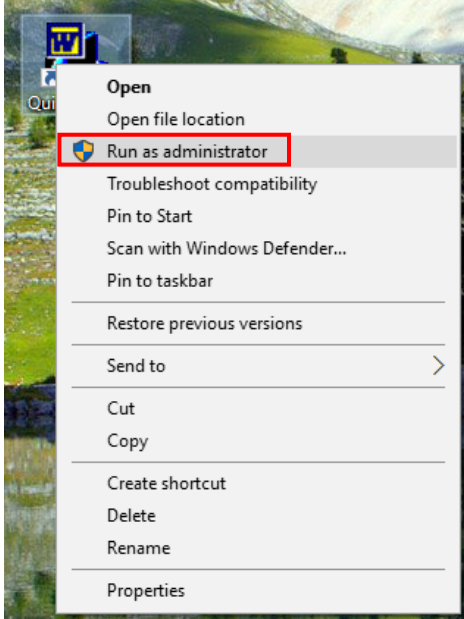
**This must be done for each User Account on the system.*

- 9. Install Sierra Wave and QuickReport as per their installation instructions.**
- 10. Follow the instructions for configuring Microsoft Word (2007, 2010, 2013, or 2016) to work with QuickReport.**

369030-629	Word 2007
369030-633	Word 2010
369030-637	Word 2013
369030-637-W16	Word 2016

11. Setting Permissions for QuickReport

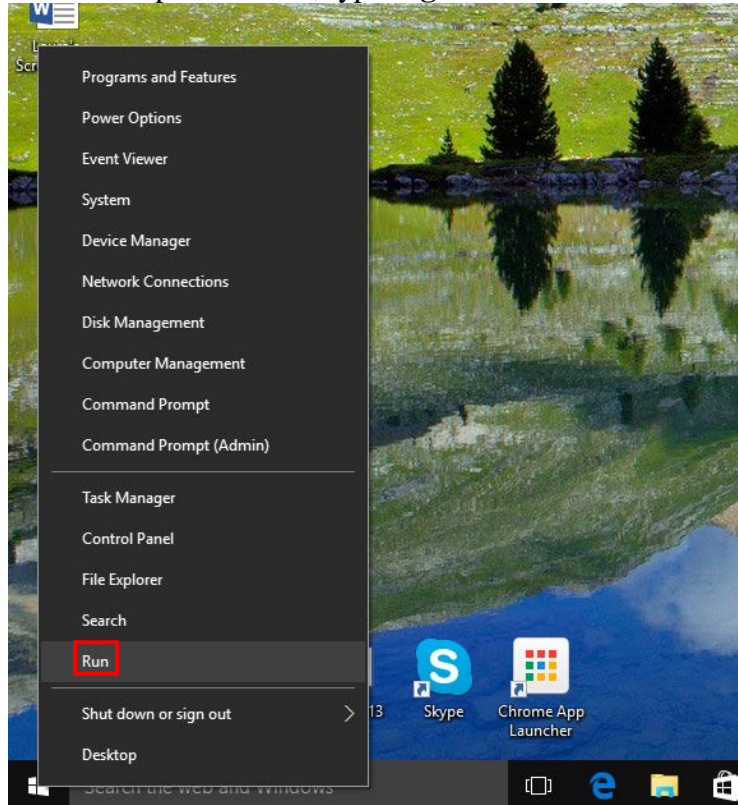
- **Right click** on the **QuickReport** icon.
- Select **Run as Administrator**.



- In the QuickReport login window; choose **SierraUser** with **no password** and click **OK**.
- The main QuickReport window will be displayed; the available report templates are shown on the left.
- Close **QuickReport**.

13. Setting Permissions for Sierra Wave

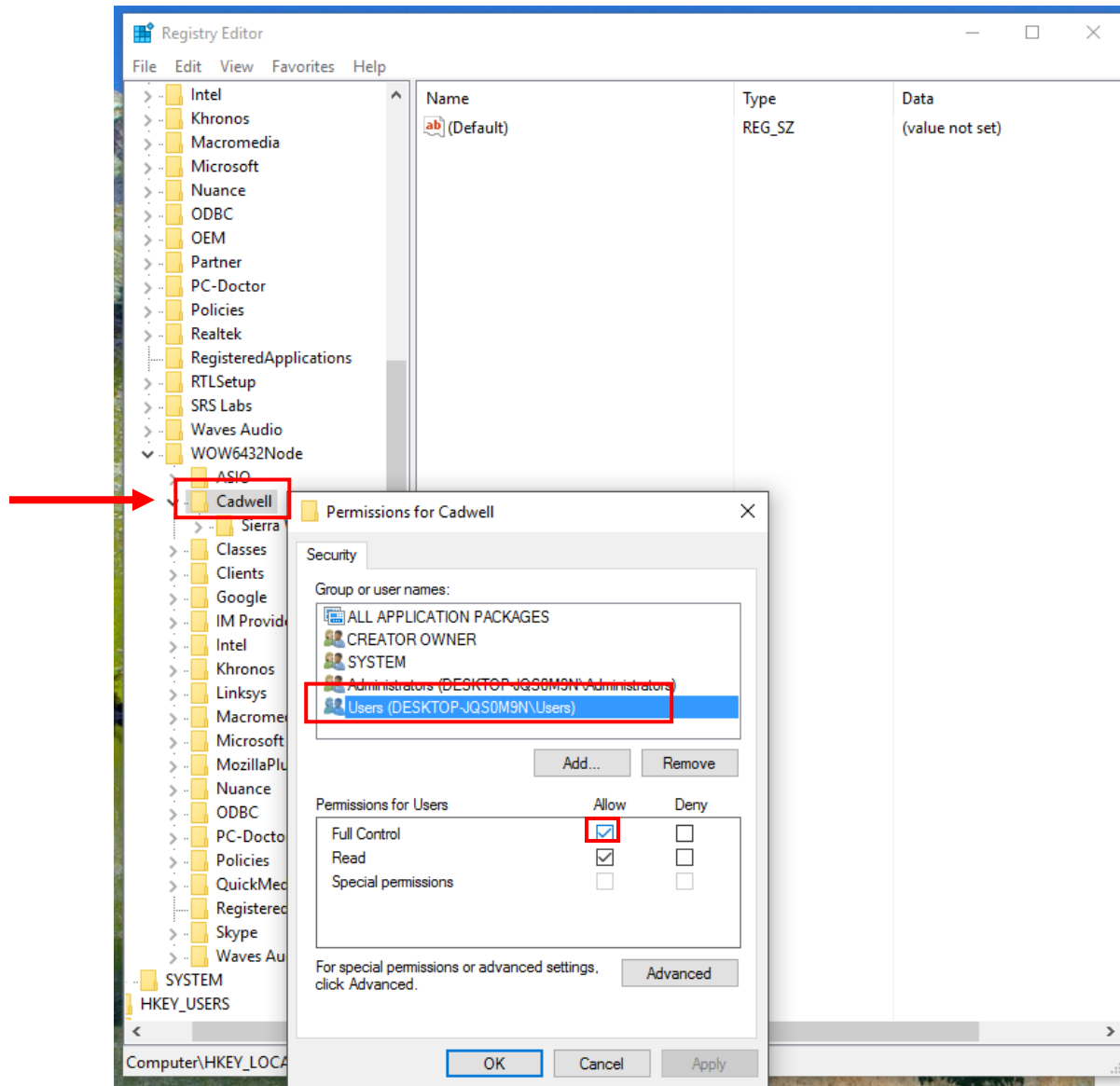
- Right click the **Start icon**.
- Click on **Run**. In the Open window, type **regedit** and click **OK**.



- In the Registry Editor, locate following registry key:

HKEY_LOCAL_MACHINE\Software\Wow6432Node\Cadwell

- **Right click** on the **Cadwell** folder
- Select **Permissions**
- Select the **Users** group in the list. In the permissions boxes below, click in the full control box.



- Click **Apply** and **OK**.
- Close the Registry Editor.